



**ITALIAN NATIONAL STRATEGY FOR INNER AREAS (SNAI):
A TOOL FOR RURAL DEVELOPMENT**
With the Case history of Inner Area “Basso Ferrarese”

Francesco Silvestri

National Committee supporting Inner Areas Strategy

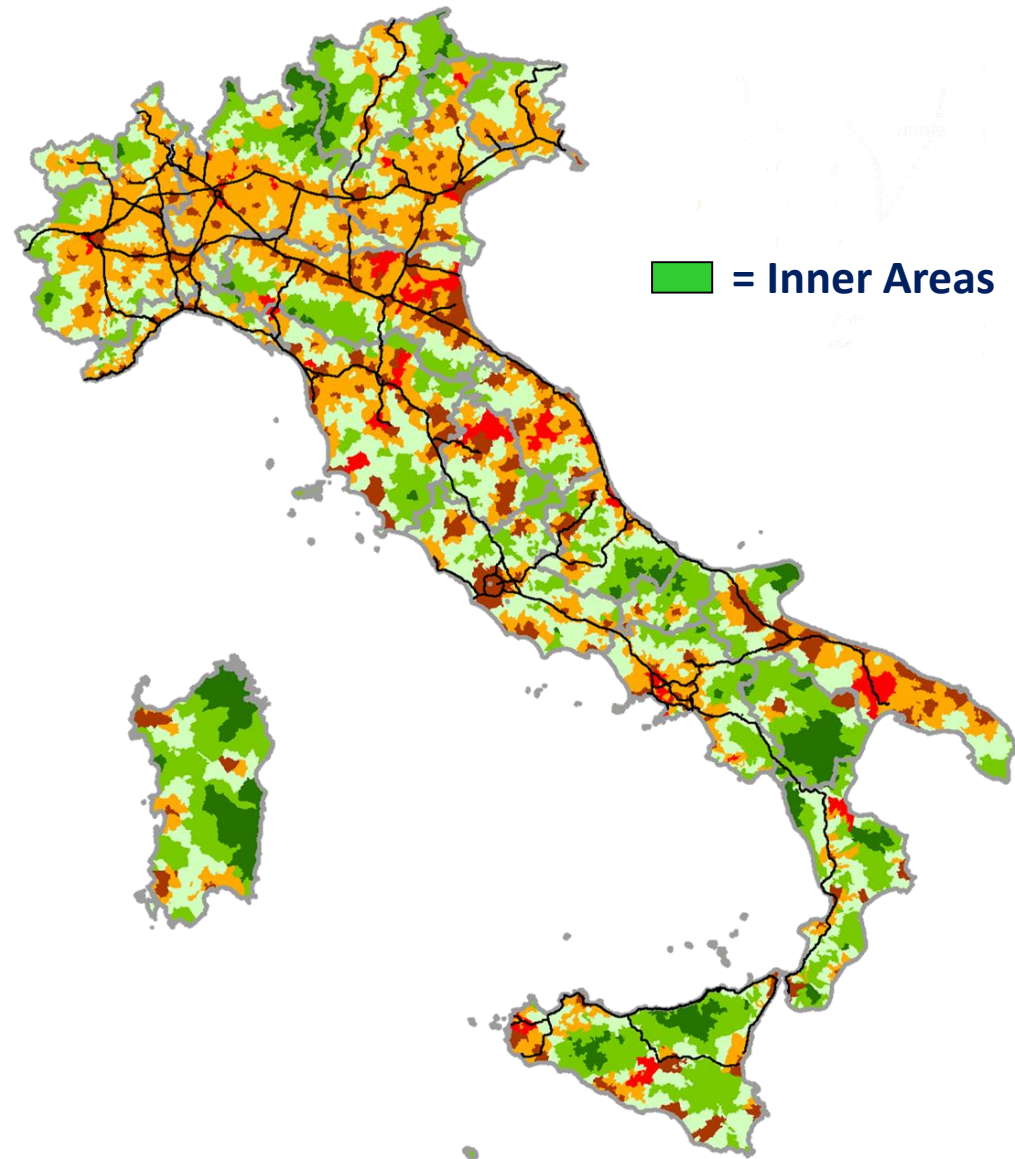
Key problems for rural space in Italy (the Inner Areas Strategy premises)

Physical: travel distance from
'Service Centers' municipalities

Digital divide: % of population
connected to broadband > 20 mbps

Demographic: loss/lower increase
and aging of population

Economic: loss of cultivated soil



Inner Areas National Strategy (SNAI): method

Inner Area Madonie (Autonomic region of Sicily, < 75% area) :

3.7 M € from National Budgetary Law to finance School, Transports and Healthcare

31 M € from Regional Funds to finance both local development and essential services (EAFRD: 1 M €)



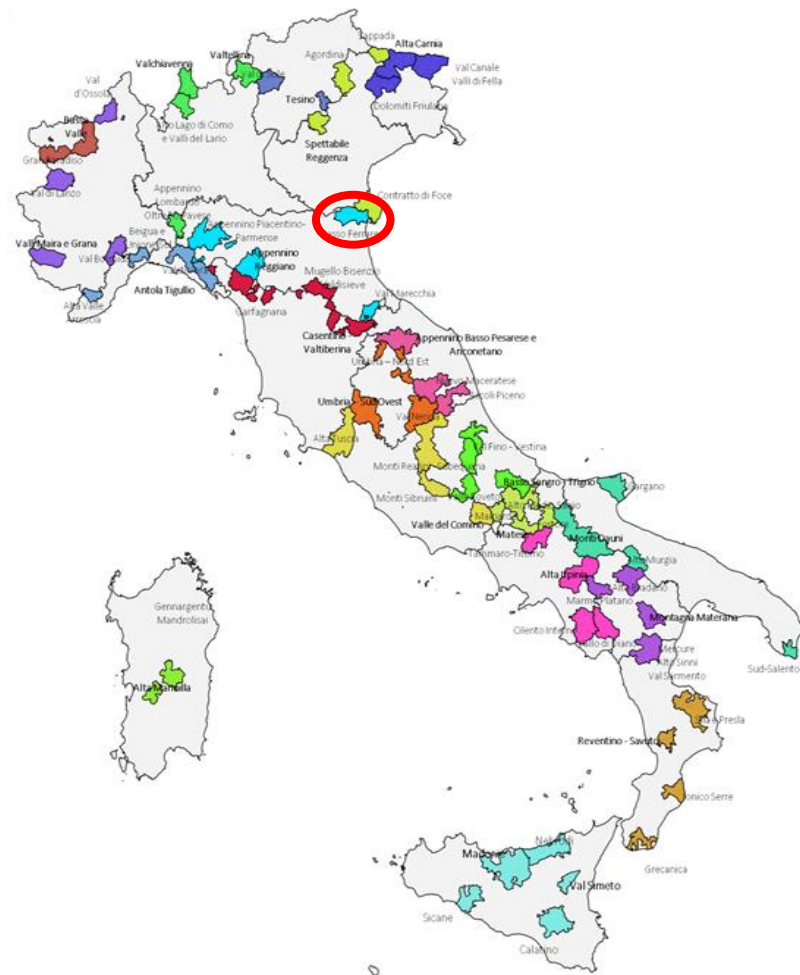
Inner Areas National Strategy (SNAI): method

Inner Area Basso Ferrarese:

3.7 M € from National Budgetary Law
to finance School, Transports and Healthcare

3.7 M € from Regional Funds
to finance local development initiatives
(tourism, agriculture, ...)

In the same area: LAG Leader Delta 2000
10.7 M €



Rural Innovation in the realm of SNAI

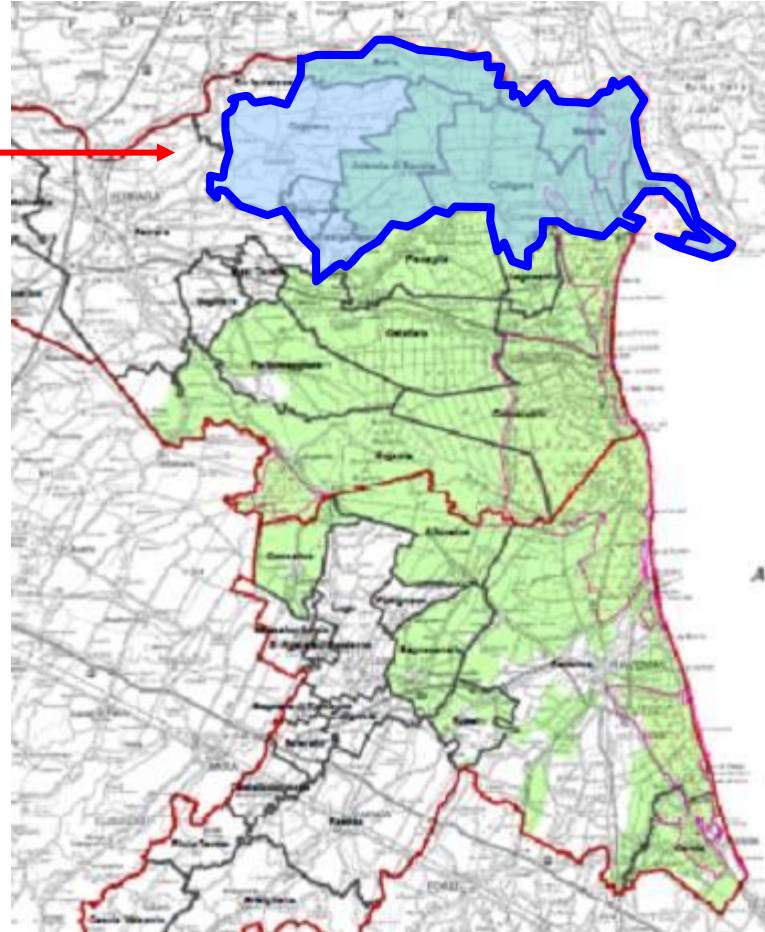
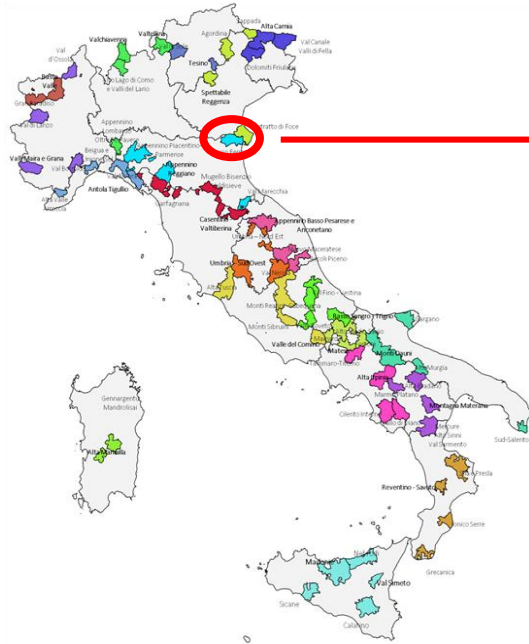
In the pilot areas that have started the process (55 out of 72)

- ❖ Laser technology (LIDAR) to get information on forests and renew local forestry industry in Alta Carnia (Friuli)
- ❖ Community car-pooling initiative to move inhabitants in Val Maira (Piedmont), with a web platform to manage the service and implemented by a community cooperative
- ❖ Remote class-rooms in secondary schools in Beigua Sol (Liguria) and Piacenza-Parma Apennine (Emilia-Romagna)
- ❖ Equipping local Pharmacy-shops with smart technologies to allow remote diagnostics by hospital personnel in Matese (Molise)
- ❖ Smart devices to allow inhabitants to monitoring landslide and strengthen civil protection in Madonie (Sicily)

Basso Ferrarese Inner Area and innovation

- ❖ **ICT for telemedicine:** high access to ER and avoidable hospitalization → ICT home heartache diagnostic + the figure of Community Healthcare Assistant
- ❖ **Community cooperatives:** a new kind of cooperatives active in market (tourism, agriculture) and public services (transports, home delivery of food and medicines, ...)

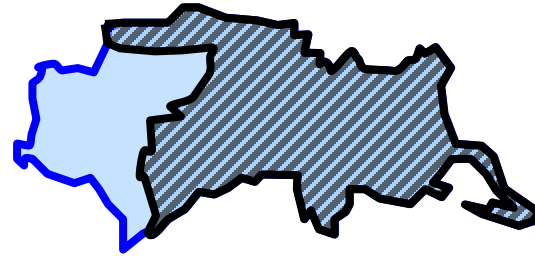
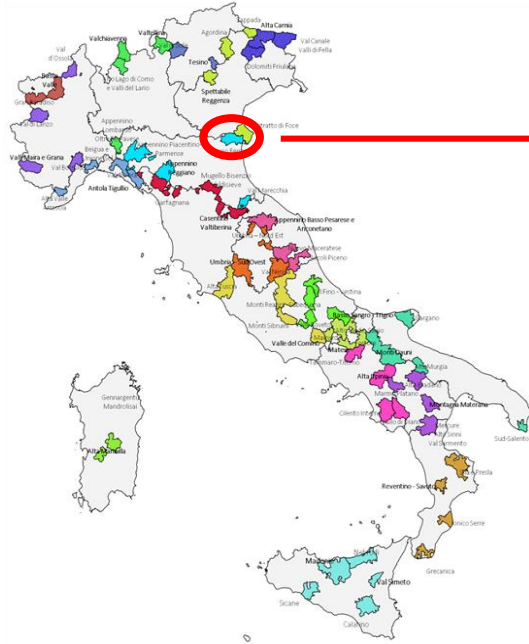
Inner Area BASSO FERRARESE



 = LAG Leader

 = Inner Area

Inner Area BASSO FERRARESE



 = LAG Leader+ Inner Area

 = Inner Area

Relation between IA Strategy and Rural Development Program/LEADER

RDP = one of Regional funds that co-finance the IA Strategy

Being EAFRD-financed, Leader is allowed to finance projects in the local IA Strategies.

Modalities:

- ❖ financing the whole rural development stream of the strategy (Alta Carnia, Friuli VG) → **substitution of RDP funds**
- ❖ covering projects due to inapplicability/out-of-time of RDP (PC-PR Apennine, Emilia-Romagna) → **complementing RDP**
- ❖ covering projects useful for IA strategy, with the rationale of multiplying financing opportunities (Basso Ferrarese, Emilia-Romagna) → **integrating Inner Areas Strategy**